

Math 105 Quiz 2

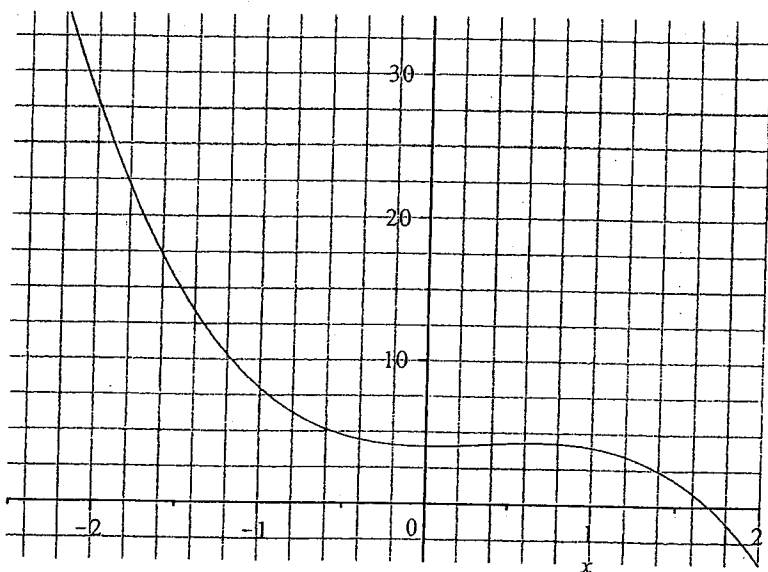
§1.4-§1.7

Name:

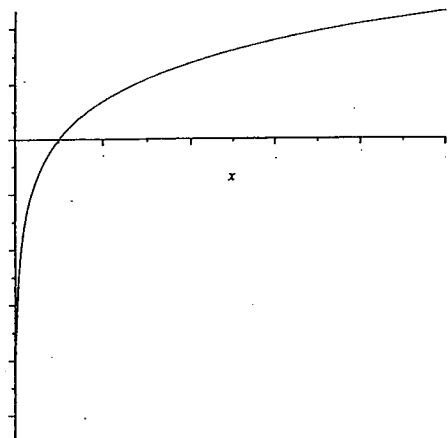
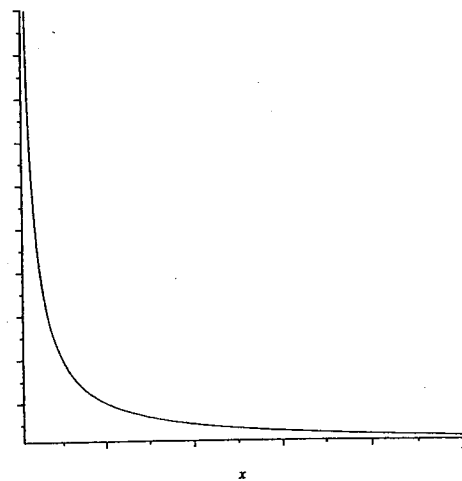
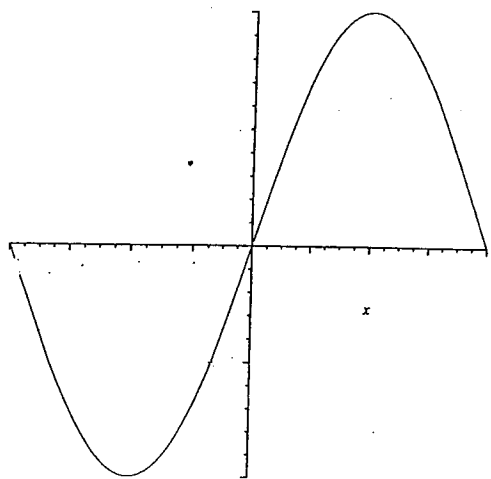
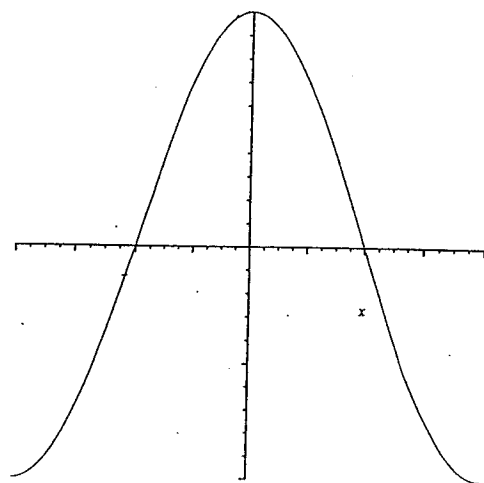
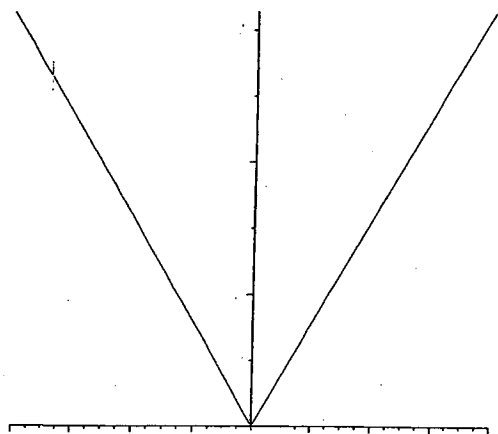
Show all work for credit.

1. Sketch the graph of a function f for which $f(x) < 0$, $f'(x) < 0$, and $f''(x) < 0$ for all x . Describe what these inequalities mean in words.

2. Given the following graph of g estimate $g'(-1)$ using the techniques in §1.5. Find the equation of the tangent line through $x = -1$.



3. Match the graphs on the *left* to the graphs of their derivatives on *the right*. Briefly explain.



2

